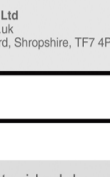


MB305M4P-B



MB312M4P-B



Copyright © ICY DOCK International. All Rights Reserved. 650322 VER 1.0



Cremax Europe GmbH
Email: support@icydock.com
Weidenweg 21H, 47059 Duisburg, Germany



Beyond Technologies UK Ltd
Email: info@beyondtech.co.uk
Unit B6, Halesfield 11, Telford, Shropshire, TF7 4PH, U.K.

1

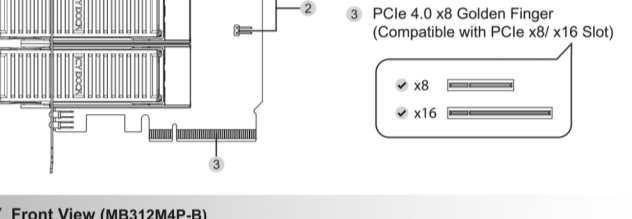
Package Contents • Packungsinhalt • Contenu • Contenido del paquete • 包装について • 包装説明 • 包装说明

Note: Please use the included screw to secure the device.

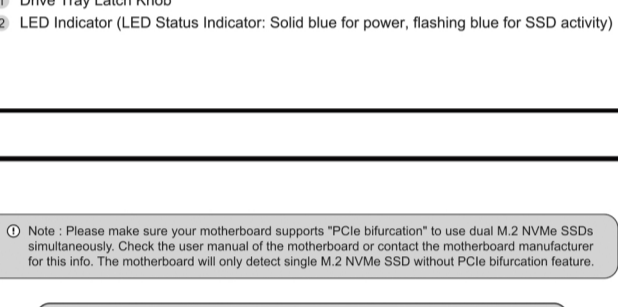
2

Device Information • Geräteinformationen • Informations dispositif • Información del dispositivo • 本体説明 • 機體説明 • 机体说明

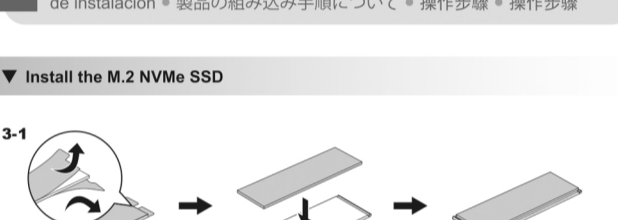
Top View (MB305M4P-B)



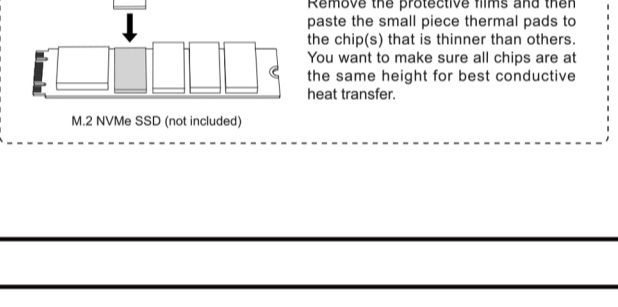
Front View (MB305M4P-B)



Top View (MB312M4P-B)



Front View (MB312M4P-B)



Note: Please make sure your motherboard supports "PCIe bifurcation" to use dual M.2 NVMe SSDs simultaneously. Check the user manual of the motherboard or contact the motherboard manufacturer for this info. The motherboard will only detect single M.2 NVMe SSD without PCIe bifurcation feature.

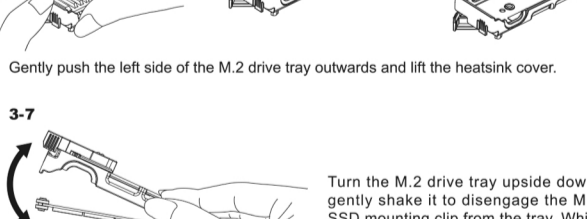
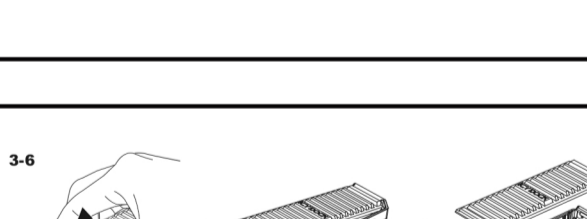
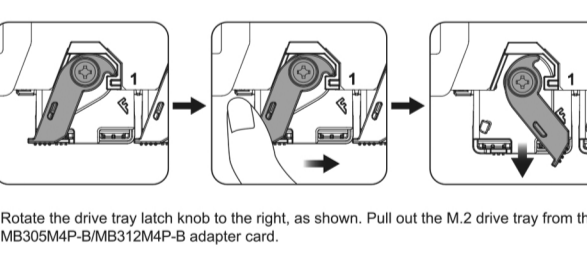
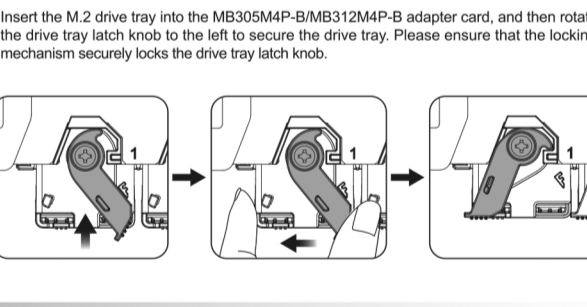
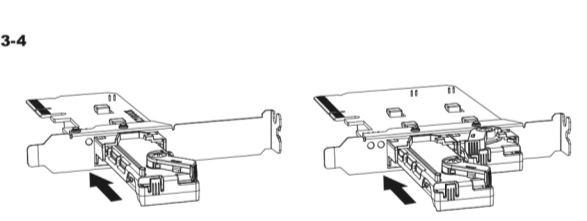
PCIe Bifurcation Setting

1. Make sure your motherboard supports the PCIe bifurcation feature.
2. Enter the BIOS menu.
3. Select EZ/Easy Mode and then click Advance/Classic Mode
4. Locate PCIe port configuration and then change the setting to x4 x4 or x4 x4 x4 x4

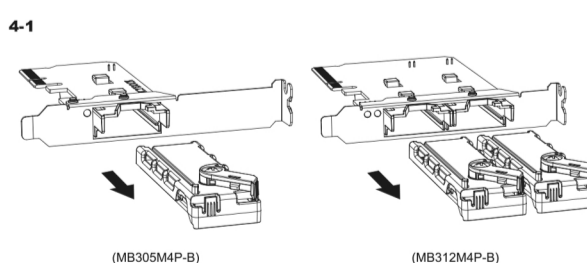
3

Installation Guide • Installationsanleitung • Guide d'Installation • Guía de instalación • 製品の組み込み手順について • 操作步驟 • 操作步驟

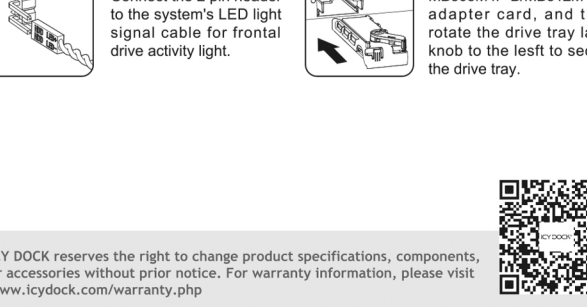
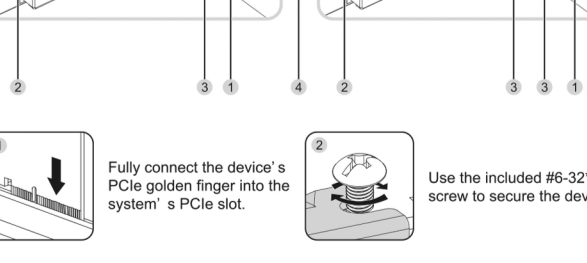
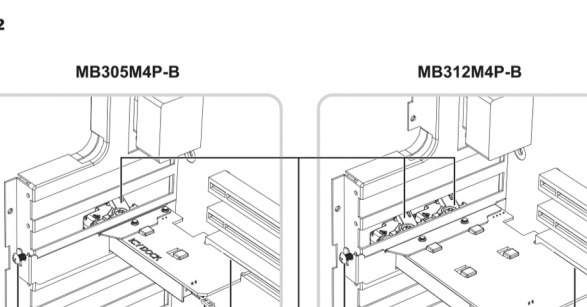
Install the M.2 NVMe SSD



Tips: If using a 1.5mm thermal pad prevents the aluminum heat sink from being installed back onto the M.2 drive tray, please switch to using a 0.5mm thermal pad instead.



Remove the M.2 drive tray and M.2 NVMe SSD



ICY DOCK reserves the right to change product specifications, components, or accessories without prior notice. For warranty information, please visit www.icydock.com/warranty.php

