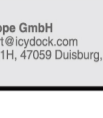


MB204MP-B
(PCIe 5.0)



MB204MP-1B
(PCIe 4.0)

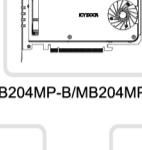


Scan the QR code for more product information

Copyright © ICY DOCK International. All Rights Reserved. 6503131 VER 2.0

1

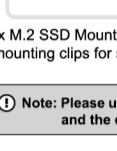
Package Contents • Packungsinhalt • Contenu • Contenido del paquete
• 包装について • 包装説明 • 包装说明



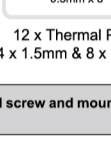
MB204MP-B/MB204MP-1B



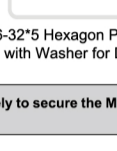
User Manual



x 8



12 x Thermal Pads
(4 x 1.5mm x 4 & 8 x 0.5mm x 8)



x 1

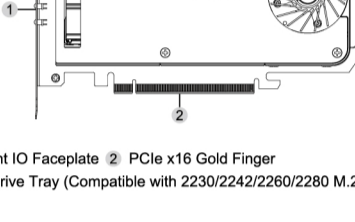
8 x M.2 SSD Mounting Clips (4 x mounting clips for spare parts) 12 x Thermal Pads (4 x 1.5mm x 4 & 8 x 0.5mm x 8) 1 x #6-32*5 Hexagon Phillips Screw with Washer for Device

ⓘ Note: Please use the included screw and mounting clips solely to secure the M.2 SSD and the device.

2

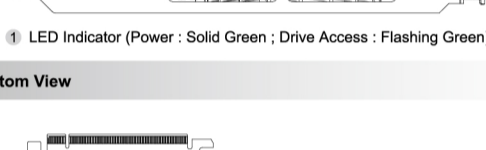
Device Information • Geräteinformationen • Informations dispositif
• Información del dispositivo • 本体説明 • 機體説明 • 機体说明

▼ Top View



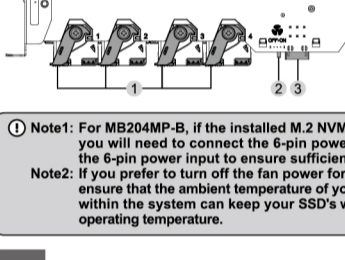
1 Full Height IO Faceplate 2 PCIe x16 Gold Finger
3 4 x M.2 Drive Tray (Compatible with 2230/2242/2260/2280 M.2 NVMe SSD)

▼ Front View



1 LED Indicator (Power : Solid Green ; Drive Access : Flashing Green)

▼ Bottom View



1 Drive Tray Latch Knob
2 Fan Power Switch
3 Optional 6-Pin Power Input (MB204MP-B only)

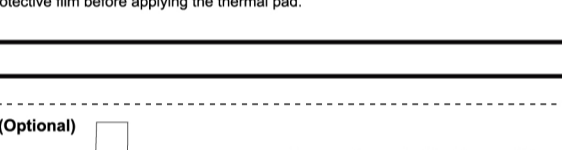
ⓘ Note1: For MB204MP-B, if the installed M.2 NVMe SSD requires power exceeding 15W, you will need to connect the 6-pin power connector from the power supply to the 6-pin power input to ensure sufficient power supply.
Note2: If you prefer to turn off the fan power for the MB204MP-B/MB204MP-1B, please ensure that the ambient temperature of your system and the cooling environment within the system can keep your SSD's working temperature within the specified operating temperature.

3

Installation Guide • Installationsanleitung • Guide d'Installation • Guía de instalación • 製品の組み込み手順について • 操作步驟 • 操作步驟

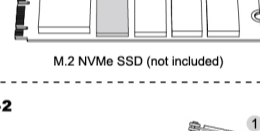
▼ Install the M.2 NVMe SSD

3-1



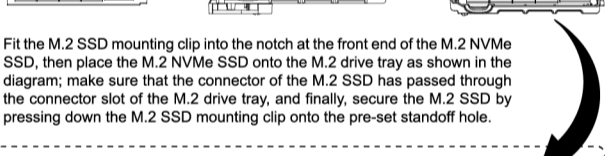
Depending on the thickness of your SSD, apply the provided 1.5mm or 0.5mm thermal pad on the smooth surface of the removed aluminum heat sink. Make sure to remove the protective film before applying the thermal pad.

(Optional)

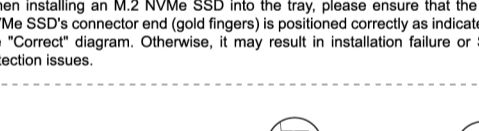


Remove the protective films and then paste the small piece thermal pads to the chip(s) that is thinner than others. You want to make sure all chips are at the same height for best conductive heat transfer.

3-2



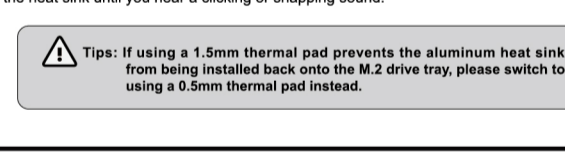
Fit the M.2 SSD mounting clip into the notch at the front end of the M.2 NVMe SSD, then place the M.2 NVMe SSD onto the M.2 drive tray as shown in the diagram; make sure that the connector of the M.2 SSD has passed through the connector slot of the M.2 drive tray, and finally, secure the M.2 SSD by pressing down the M.2 SSD mounting clip onto the pre-set standoff hole.



Correct NG

When installing an M.2 NVMe SSD into the tray, please ensure that the M.2 NVMe SSD's connector end (gold fingers) is positioned correctly as indicated in the "Correct" diagram. Otherwise, it may result in installation failure or SSD detection issues.

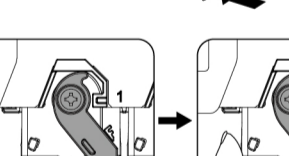
3-3



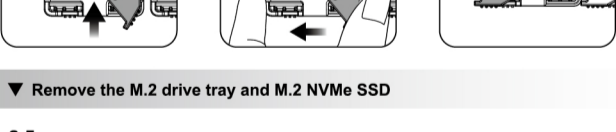
Reattach the aluminum heat sink onto the M.2 drive tray and press down the front end of the heat sink until you hear a clicking or snapping sound.

⚠ Tips: If using a 1.5mm thermal pad prevents the aluminum heat sink from being installed back onto the M.2 drive tray, please switch to using a 0.5mm thermal pad instead.

3-4

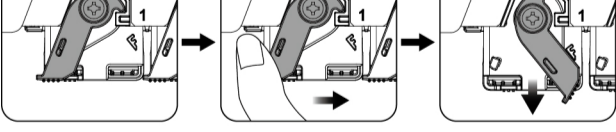


Insert the M.2 drive tray into the MB204MP-B/MB204MP-1B adapter card, and then rotate the drive tray latch knob to the left to secure the drive tray. Please ensure that the locking mechanism securely locks the drive tray latch knob.



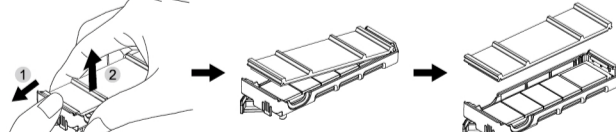
▼ Remove the M.2 drive tray and M.2 NVMe SSD

3-5



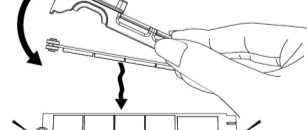
Rotate the drive tray latch knob to the right, as shown. Pull out the M.2 drive tray from the MB204MP-B/MB204MP-1B adapter card.

3-6



Gently push the left side of the M.2 drive tray & outwards and lift the heatsink cover.

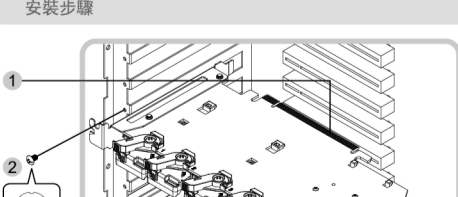
3-7



Turn the M.2 drive tray upside down, gently shake it to disengage the M.2 SSD mounting clip from the tray. While inverting and shaking the M.2 drive tray, please secure the M.2 SSD with your hand to prevent it from falling out of the tray.

4

Device Installation • Installation eines Gerätes • Installation du dispositif
• Instalación del dispositivo • デバイス取付手順 • 装置安裝步驟 • 设备安裝步驟



1 Fully connect the device's PCIe connector into the system's PCIe slot.
2 Use the included #6-32*5 screw to secure the device.

ⓘ Note:
• The MB204MP-B/MB204MP-1B does not support the NVMe hot-plug function due to the M.2 SSD specification limitation. Therefore, please power off the system before removing the M.2 NVMe SSD to prevent unexpected system errors.
• To utilize an M.2 NVMe SSD on a PCIe x16 slot, the motherboard or add-on card must support PCIe Bifurcation. This mode divides PCIe lanes into specific configurations like x4, x4, x4, x4 for a x16 slot, ensuring the SSD can be read by the system. For compatible hardware, please scan the QR code on the front cover of the manual to get more information.

